

Panda Security for Sendmail

Antivirus and antispam protection for Sendmail mail servers and gateways

Reduces the storage space needed for mailboxes while protecting clients' email

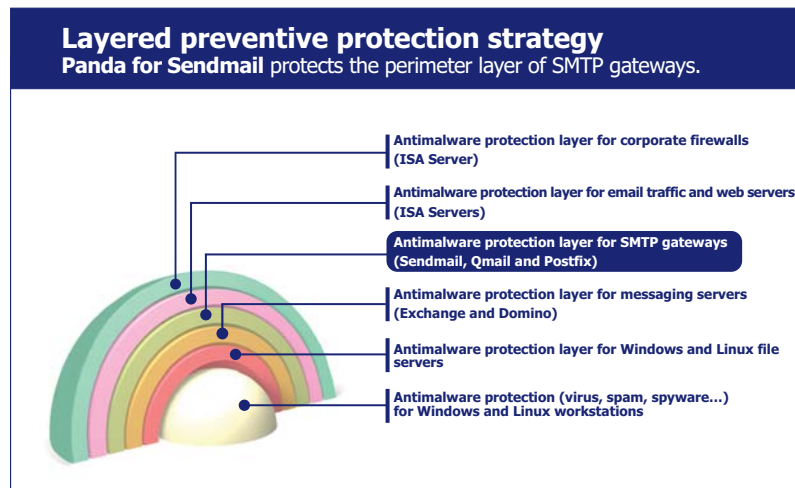
Email has become the most popular tool for sharing information both inside and outside the company. As a result, **the volume of email messages is constantly growing**, and so is the number of attacks of all kinds that use email as a vehicle for infiltrating computers via the Internet.

Trusting in the protection installed on the clients is simply not an option, as this uses a large amount of storage resources and bandwidth. Worse still, if just a single workstation is infected, the entire company's reputation is at risk.

Companies need a complete, surefire security solution to eliminate malware and stop it from burning up resources

Panda Security for Sendmail is the solution from Panda Security for companies and Internet Service Providers that demand flexible antimalware protection: viruses, spam, spyware, phishing, hoaxes, security risks, etc. for SMTP mail gateways Sendmail Open Source and Sendmail Switch.

Thanks to MilterAPI technology (an application programming interface for content management) it is possible to scan both inbound and outbound mail for new threats that affect the corporate perimeter.



Main benefits

- **Reestablishes email** as a secure communications channel.
- **Ensures mail server resources** for productive traffic, reducing the need for unnecessary investment in additional hardware and communication lines.
- **Reduces time spent on management and maintenance**, as it automates routine tasks and both the interface and protection options adapt to the precise needs of each administrator.

Key features

- **Maximum protection** for email. Completely deletes infected messages preventing Denial of Service (DoS) attacks.
- **Complete and accurate antispam protection** -easy to configure and with high detection ratios.
- **Reliable detection and flexible configuration** of the email domains and accounts to inspect. It also provides a configurable alerts and notifications system.
- **Transparent incremental updates** of the Virus Signature File and the antispam system.
- **Centralized and remote administration** through a web-based console or with the Windows management and deployment tool AdminSecure.
- **Optimized performance** of the antivirus thanks to in-memory scanning technology.
- Integration with **latest-generation MilterAPI technology** for management of malicious content.



Maximum protection for mail

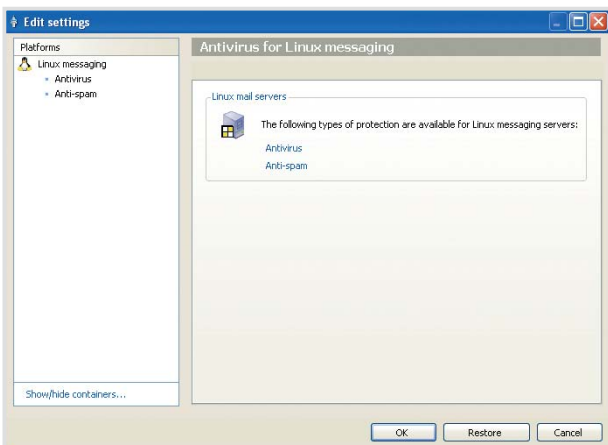
Panda for Sendmail scans -in memory- attachments, compressed files, nested messages and even embedded OLE objects encrusted in messages, rooting out all types of malware, such as **spyware, worms, Trojans, dialers, jokes, security risks and hacking tools**.

Panda for Sendmail not only scans the body of plain text messages but also inspects both the body of HTML messages and their components in search of vulnerabilities and threats.

Complete and accurate antispam protection

Panda for Sendmail incorporates an advanced antispam engine based on **rules, lists, patterns, Bayesian algorithms and remote learning** in order to optimize the accuracy of the spam classification process.

Panda for Sendmail detects junk mail that uses false NDR messages. As well as incorporating various levels of sensitivity, it includes senders and domains in white lists and blacklists and identifies spam in the subject of the message to help the users without interfering with their work.



High reliability and flexible configuration

The advanced *Genetic Heuristic Engine* (GHE) incorporated in **Panda for Sendmail** detects new threats and isolates suspicious code. It also automatically requests analysis from Panda to disinfect threats and notify the sender or recipient of the message in just a few hours.

Panda for Sendmail adapts to your precise needs, allowing you to configure and select the domains and email addresses to scan or exclude from scanning, for the protection to be prioritized if the server becomes saturated.

Transparent incremental updates

Panda for Sendmail automatically checks every hour, without administrator intervention, if there is an update available. Incremental updates of the virus signature files reduce total bandwidth usage and mitigate communication peaks.

Remote, centralized administration

Panda for Sendmail can be managed from two completely interchangeable administration consoles to facilitate installation and monitoring of incidents and updates across the network.

As well as using the traditional web console, **Panda for Sendmail** can now be administered from Windows with **Panda AdminSecure**.

This remote control tool monitors the protection level of each mail server and of the rest of Panda's solutions. To do this, it has views, graphic reports, warnings, etc. in order to provide a global, real-time view of the protection status of the company.

Optimized performance

Its innovative design supports multiprocessor machines and scans all types of compressed files in memory much faster than when the files are copied to the hard disk.

Latest-generation technology

Panda for Sendmail can be installed directly on the computer using the SMTP gateway, in any Linux server or the filter installed in another server can be shared across several gateways.

This is thanks to MilterAPI, an application programming interface for content management, which helps it integrate perfectly in Linux systems, making **Panda for Sendmail** the ideal choice for these platforms.

Technical requirements

Pentium processor at 200 MHz (or higher), with 64 MB RAM and 80 MB free hard disk space. Operating system to integrate with AdminSecure or independent installation: Red Hat 7.2, 9, Red Hat Enterprise 2.1, 3 AS/ES, 4 AS/ES, Debian 3.0, 3.1, Mandrake 9.0, 9.1, 10, Mandrake Corporate Server 4.0, Suse 8.1, 8.2, 9.0, 9.1 Professional, 9.2 Professional, Suse 9 Enterprise Server and Suse 10 Enterprise Server,

Sendmail SMTP server version 8.11.3

Web console: Internet Explorer 4.0 (or later) or Netscape Navigator 4.6 (or later).

Panda AdminSecure: Pentium III 800 MHz, 512 MB RAM, 512 MB hard disk. Operating systems: Windows NT4 SP6, 2000, XP, Vista 32 & 64 bit, Server 2003.

"We have been very impressed by the professionalism of Panda Security's technicians throughout the antivirus implementation process."

Shi Jian Dong. Shanghai branch director. People's Bank of China. CHINA.



Powered by:
 mailshell™

Remember **Panda for Sendmail** can be bought separately or as part of **Panda Security for Enterprise**.

Check it now at www.pandasecurity.com
Get your evaluation version of Panda Security for Sendmail.

PANDA | **20th Anniversary**
SECURITY | 1990-2010