

## Keep your company's email communication efficient and effective

Use of email has greatly expanded access to information. But the sheer **volume of message traffic now threatens employee productivity**. Workers now receive numerous unsolicited messages (spam, jokes, worms, spyware, phishing...) that aim to trick users either in order to spread or for financial gain.

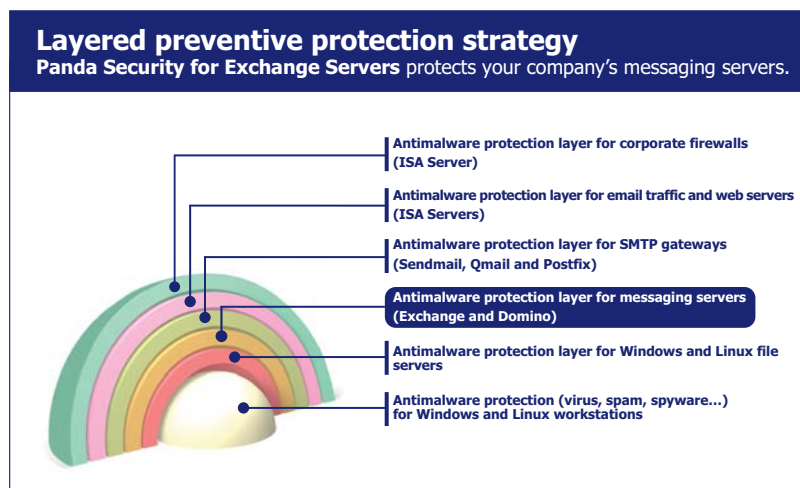
This flood of messages also overloads communications and uses up workstation resources. For this reason, **email protection in workstations needs to be complemented** with a filter system that seamlessly integrates with Microsoft Exchange Server, to reliably eliminate these dangerous messages and guarantee effective email communication.

## Eliminate email threats before they reach users

**Panda Security for Exchange Servers** frees up your Exchange Server from traffic overloads generated by junk mail, ensuring that inbound, outbound and internal email is free from malware.

The antispam protection blocks messages before they reach recipients' mailboxes and offensive content is filtered out through an intuitive wizard combining a wide range of rules. Similarly, suspicious files are detected by the heuristic engine and sent to quarantine.

With attachments scanned in-memory, **Panda Security for Exchange Servers** offers maximum performance both under individual installations and in Exchange Server clusters. **Panda Security for Exchange Servers** provides the most complete functionality for Exchange Server 2000, 2003, 2007 and **now 2010**. It also integrates in the anti-spam infrastructure of Exchange Server.



### Main benefits

- Its customizable security policies help protect **corporate image**, avoid **fines** for failure to comply with regulations, prevent industrial espionage, data theft, etc.
- **Boosts** administrator and end-user **productivity**.
- **Maximizes** email communication **security**, preventing infections from spreading.
- **New Compatibility with Exchange 2010**.

### Key features

- **Complete integrated protection** against all types of malware (viruses, hoaxes, spyware, etc.), threats and intruders that infiltrate systems via email.
- **Antispam protection** for all versions of Exchange, keeping junk mail from saturating inboxes.
- **Exhaustive content filtering** for preventative blocking of malware and spam, in both inbound and outbound email.
- **Hourly automatic updates** of the malware signature file.
- **Optimized in-memory scanning and disinfection**, under any protocol and for all folders.
- **Seamless integration** in Exchange environments and fully cluster-aware.
- **Centralized, remote administration** with Panda AdminSecure.
- **High scalability and availability** for large enterprise environments.



## Complete, integrated protection against all kinds of threats

**Panda for Exchange** blocks threats that try to penetrate via email, such as viruses, worms, Trojans, spyware, adware, identity theft, dialers, jokes, hoaxes and hacking tools.

To prevent infections spreading out from email, **Panda for Exchange** uses a versatile malware detection and disinfection engine complemented by a new heuristic scanner which blocks and detects new malware using statistical pattern analysis and neutralizing suspicious messages.

**Panda for Exchange** also allows scanning of mail in transit.

## Effective antispam protection

The antispam module identifies, blocks and destroys junk mail before it reaches mailboxes.

With more than 300,000 antispam algorithms and multi-functional techniques (rules, heuristic, Bayesian, lists and remote training), this new engine provides a reliable and effective way of dealing with spam. It is also possible to set a maximum number of recipients of a message in order to prevent massive attacks.

## Exhaustive content-filter

**Panda for Exchange** filters content by sender, recipient, subject or message text. In order to offer maximum effectiveness and versatility, it includes a wizard for combining additional variables: name, extension, size, password protection, dangerous MIME types...

As a result, **Panda for Exchange** filters all type of content, without saturating server communications.

## Hourly automatic updates

**Panda for Exchange** updates automatically at least once an hour. These updates are incremental, only downloading the file with the signatures that have appeared since the last update. In the event of a virus alert, this file can be patched immediately in order to detect the exploit and close down the risk window.

## Optimized scanning and disinfection

Panda Security's *VirtualFile* technology scans all files in-memory, with faster results as it is not necessary to copy them to disk.

**Panda for Exchange** monitors MAPI, POP3 and SMTP messages. **Panda for Exchange** also monitors messages in MAPI, POP3, and IMAP or SMTP protocols and can enhance scanning of HTML code to locate vulnerabilities, malware or filterable elements within an attached HTML file.

## Seamless integration in all Exchange environments

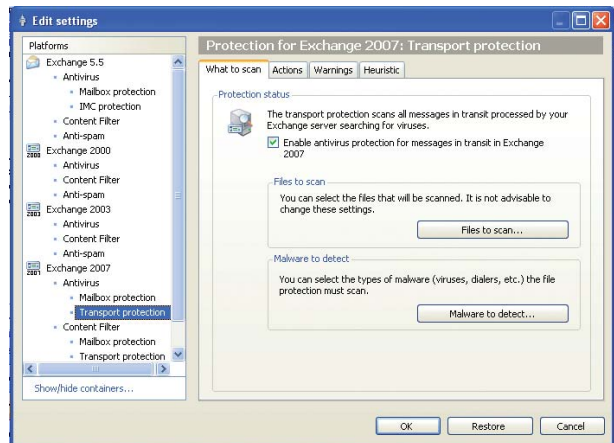
**Panda for Exchange** is fully cluster-aware and supports 64-bit microprocessors, guaranteeing investment and compliance with performance and reliability requirements.

**Panda for Exchange** integrates seamlessly with all versions of the Exchange platform, using *VSAPI* virus scanning technology and the *SCL* (Spam Confidence Level) antispam system of Exchange Server 2003.

**Panda for Exchange** offers seamless integration with Exchange 2007 and 2010 as each server role in Exchange (edge, hub, mailbox) is protected in the most appropriate way.

## Remote, centralized administration

**Panda for Exchange** is managed centrally through **Panda AdminSecure**. This administration tool offers a complete system of real-time graphic reports, risk assessment and warnings.



## High scalability and availability

**Panda AdminSecure** offers multiple views for remote management and updating of Exchange Servers via WAN connections. Its *UltraFast* scan engine offers maximum performance and has been optimized to provide non-stop protection for your mail traffic.

## Technical requirements

### Panda AdminSecure Console

Pentium II 266 MHz or above.  
RAM: 140MB.  
Hard disk free space: 140MB.  
Internet Explorer 5.5.  
Windows installer 2.0.

**AdminSecure operating systems:** Windows 2000 / XP / XP 64 bits, Terminal Server, Windows 2000 Server SBS, Windows Server 2003 Enterprise Edition/SBS/R2, Windows Server 64-bit, Windows Vista 32 bits/64 bits, Windows Server 2008 (32 and 64 bits).

### Panda Security for Exchange

#### Exchange Server 2000/2003

Pentium II 500MHz or above.  
Minimum RAM: 512MB for 2000 and 1GB for 2003.  
Hard disk free space: 200MB.

**Operating systems (2000):** Windows 2000 Server (SP3 or higher), 2000 Advanced Server, Windows Server 2003 Enterprise Edition SP1 RC2 Server 2003 R2.

**Applications:** Microsoft Exchange Server 2000 SP1 or higher, including cluster, Exchange Server 2003 SP1 or higher.

#### Exchange Server 2007/2010

Intel processor with Intel Extended Memory 64 or AMD with AMD64 platforms.  
RAM memory: 2GB minimum (4GB for Exchange 2010).  
Hard disk free space: 250MB.

**Operating systems:** Windows Server 2003 x64 or Windows Server 2008 64 bits SP2.  
**Applications:** Microsoft Exchange Server 2007 SP1 and SP2.

"The incorporation of content filtering features in Panda Antivirus for Exchange 2000 through the new Virus Scanning API (VSAPI) is an excellent way of protecting messaging infrastructures."

Kevin McCuiston. Product Manager. Microsoft Exchange Group. USA.

## Panda Security Certifications



Remember **Panda for Exchange** can be bought separately or as part of **Panda Security for Business** or **Panda Security for Enterprise**.

Check it now at [www.pandasecurity.com](http://www.pandasecurity.com)  
Get your evaluation version of Panda Security for Exchange Servers.

**PANDA** | **20th Anniversary**  
SECURITY 1990-2010